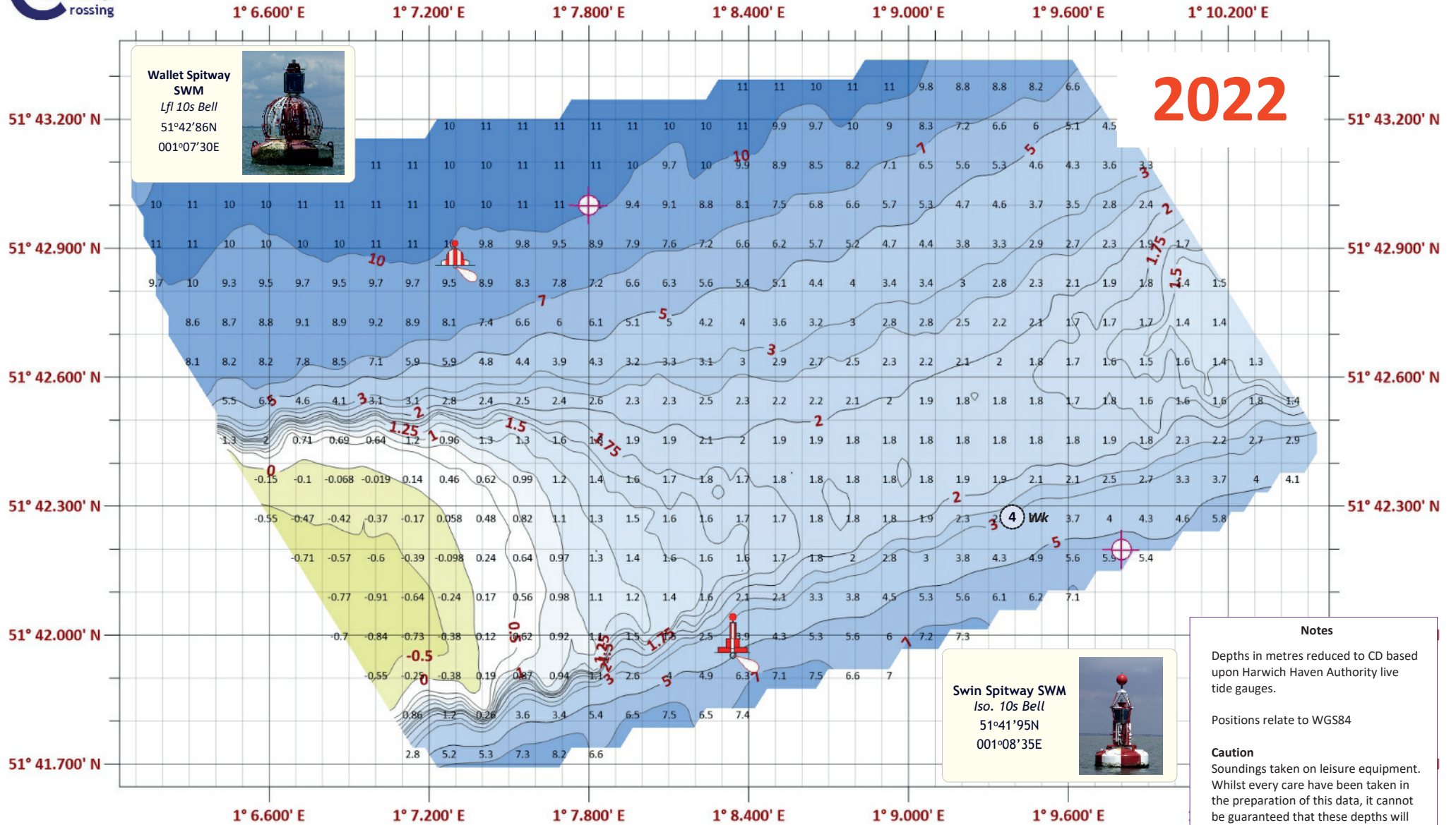


The Spitway

Chartlet is based upon 13474 soundings on the 30th May, 2022

(C) Copyright: R. Gaspar 2022: Crossing the Thames Estuary



Wallet Spitway SWM
Lfl 10s Bell
 51°42'86N
 001°07'30E

Swin Spitway SWM
Iso. 10s Bell
 51°41'95N
 001°08'35E

Some notes, recommendations and cautions upon the Spitway chartlet.

The Spitway is to most shallow recognised swatchway in the Thames Estuary. Currently the swatch is changing little at the moment. Depths are shown in metres and is reduced to chart datum using the Harwich Haven Authority live tide heights at the Fort Massac gauge and interpolating the UKHO Co-Tidal charts. Soundings are based on **WGS84**. The Chartlet is created using 'Surfer' software. Note that the contours have been selected to be deliberately irregular, viz: 10, 7, 5, 3, 2.5, 2, 1.9, 1.8, 1.75, 1.6, 1.5, 1.25, 1, 0.5, 0, -0.5m. This is intended to provide the important detail of the Spitway swatch.

Caution

Soundings were taken on 30.05.22 using leisure equipment using 13473 soundings. Whilst every care has been taken in the preparation of this data, it cannot be guaranteed that depths will remain. The Wreck is shown on Admiralty Charts as having swept depth of 4 metres by sounding.

Recommendations

For those with deep draught, a transit is suggested using the best 'least depth'. These are very suitable if heading to or from any of the Sunk Sand crossings.

North Wpt: 51°43'.000N 001°07'.800E, **South Wpt:** 51°42'.200N 001°09'.800E. The transit is 1.48nm 122°T/302°T..

Tidal Heights

At the Spitway

- Mean HW Springs** = Approx. 42 minutes before HW Sheerness and approx. 18 minutes after HW Walton
- Mean HW Neaps** = Approx. 32 minutes before HW Sheerness and approx. 19 minutes after HW Walton
- Mean LW Springs** = Approx. 42 minutes before LW Sheerness and approx. 30 minutes after LW Walton
- Mean LW Neaps** = Approx. 22 minutes before LW Sheerness and approx. 21 minutes after LW Walton

Unfortunately the Walton live tide gauge is no longer operating. However, a quick simple estimate of the current height of tide is using the Port of London Authority Margate live tide gauge. You will get at least the same height of tide at the Spitway as at Margate. The Port of London VTS broadcasts live tidal heights at four tide gauges 15 minutes before the hour and 15 minutes after on VHF Channel 69. The tide gauges reported include the Margate tide gauge. Receiving the broadcast on Ch 69. can be difficult at the Spitway but since for the majority, LW at the Spitway is likely to be for those northbound, it is a good idea to listen into Ch. 69 from the beginning of Fisherman's Gat. VHF Ch. 69 can provide a useful idea of traffic in the Black Deep (shipping has priority) and can also provide information at the height of tide at the SW Sunk swatchway: height of tide at the Margate PLA gauge = height of tide at the SW Sunk swatchway.

