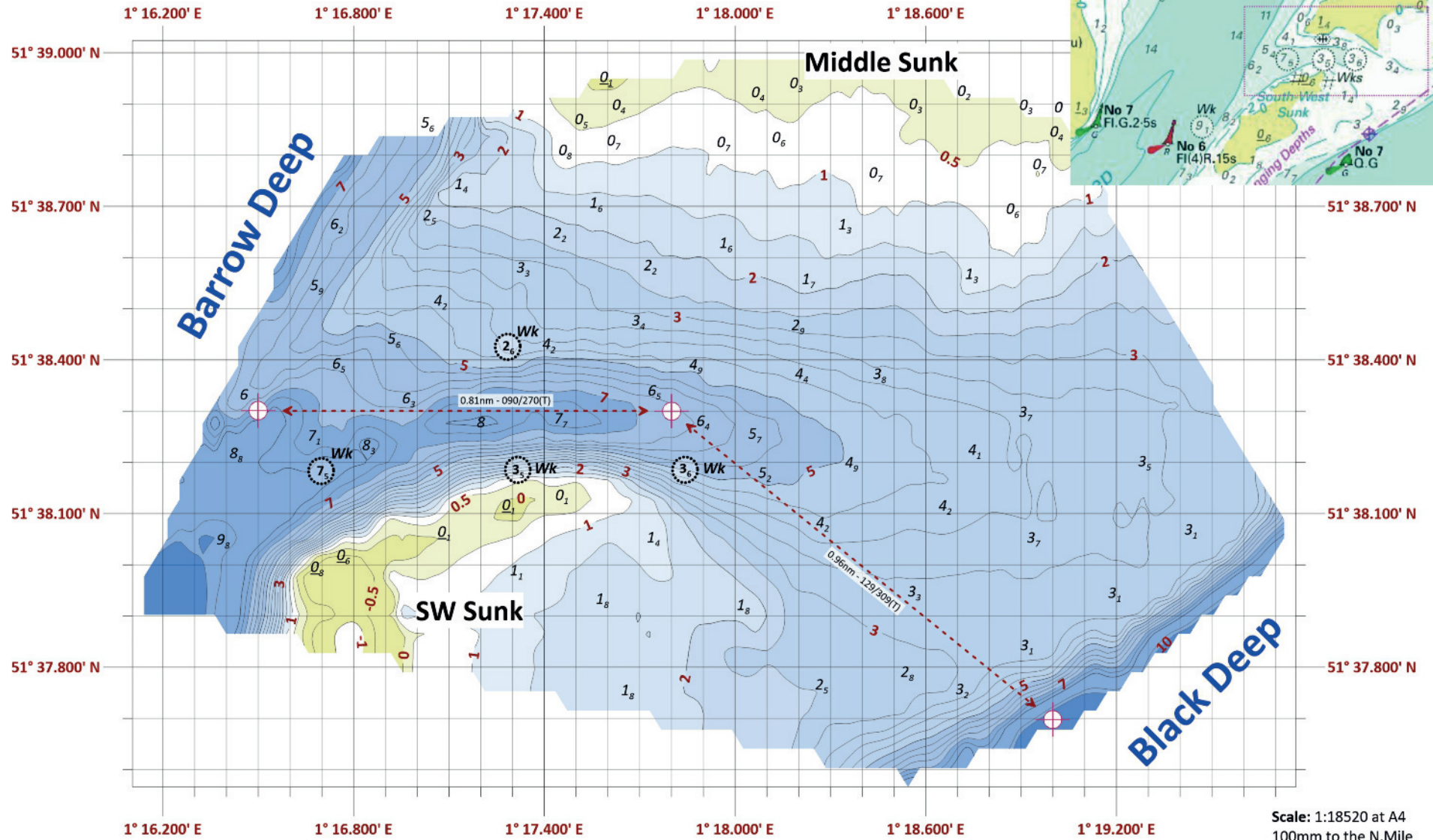


SW Sunk swatchway 2023



Scale: 1:18520 at A4
100mm to the N.Mile

This chartlet uses data kindly provided by the Port of London Authority

Grid data transposed to WGS84 (Mercator Projection EPSG3395) using a composite of 16474 soundings reduced to chart datum taken on 5th April, and, 22nd and 23rd August, 2023
Whilst every care has been taken in the preparation of this data, it cannot be guaranteed that these depths will remain. Navigators should consider the suitability of the waypoints for their own use.

The waypoints are still as placed in 2022: West Side: 51°38'300N, 001°16'500E - Central: 51°38'300N, 001°17'800E - East Side: 51°37'700N, 001°19'000E