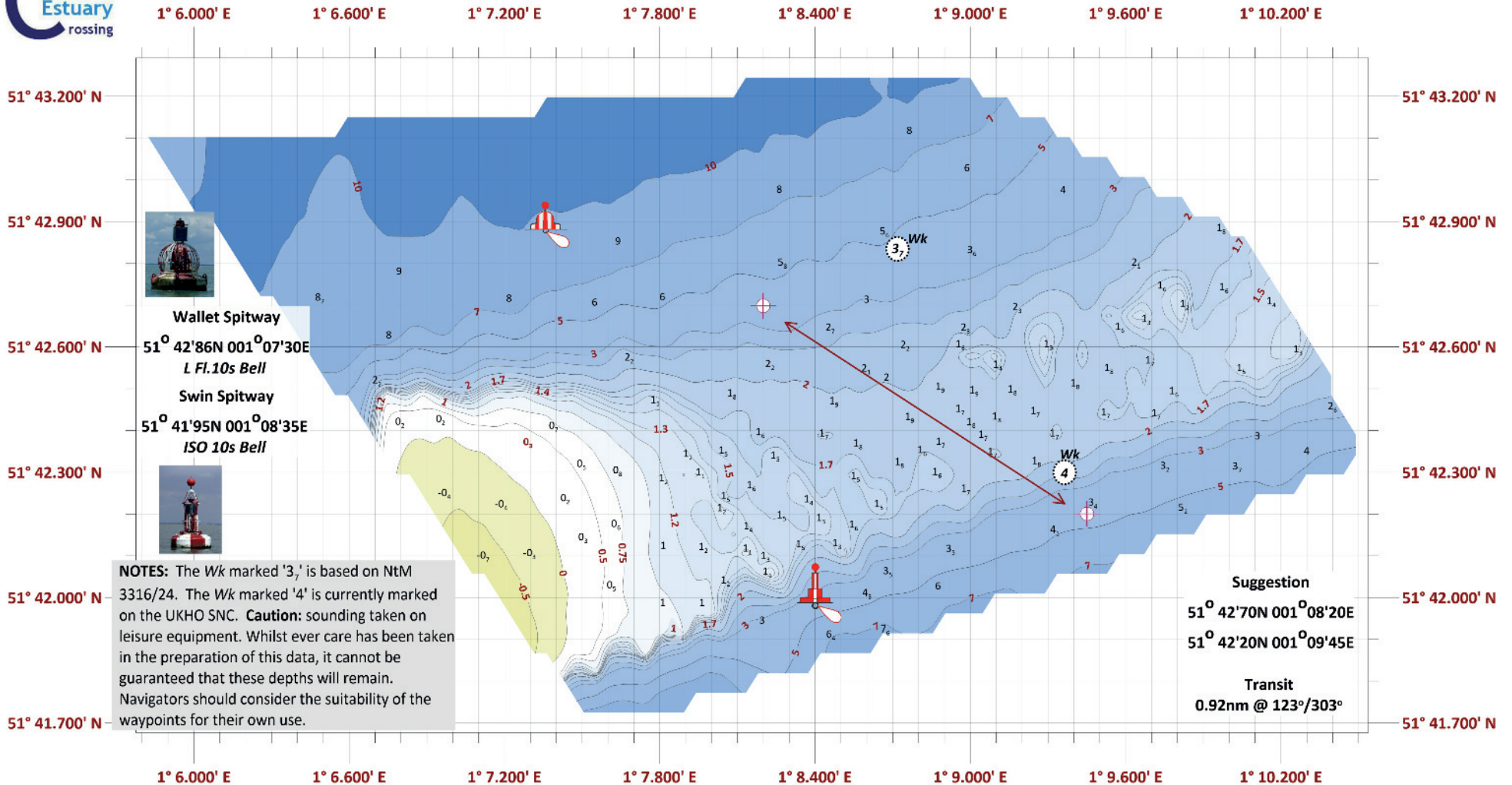


Spitway 2025



New Survey 2025

Survey conducted on Tuesday 11th October, 2025. 13984 soundings were used for the drawing of this chartlet. Grid system is WGS84, Mercator Projection EPSG3395.

Download @ www.crossingthamesestuary.com Copyright: R.Gaspar 2025: Crossing the Thames Estuary ('Spitway 2025 Download V1')