

Crossing the Thames Estuary

Second Edition

Updates

Update No 3

Following CTTE's submission in 2014 of survey data of the SW Sunk swatchway to the UK Hydrographic Office, the UKHO asked the Port of London Authority to include the area in their next survey. This they did in February, this year (2015). The results showed almost exact correlation with the CTTE survey and therefore it seems likely that this swatchway will remain viable for 2015.

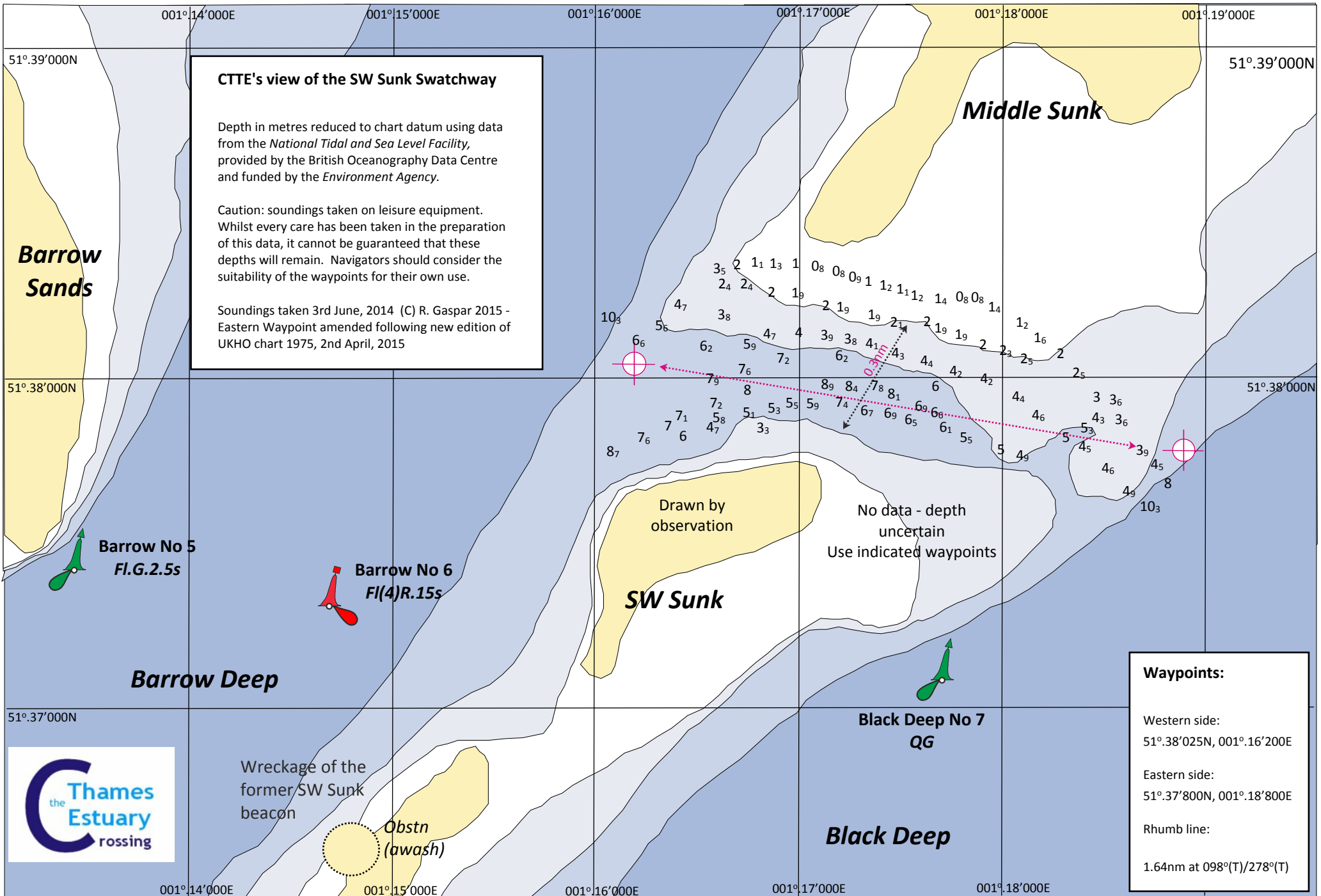
The UKHO reissued Chart 1975 (Thames Estuary – Northern Part) on 2nd April, 2015 to include the PLA data from which it seems logical to move the eastern waypoint very slightly to 51°37'800N 001°18'800E to keep the rhumb line more central in the best water. Put simply, the swatchway runs almost west-east (098°(T)/278°(T)), has better than 7m in the western side but decreases to better than 4m on the eastern side (edge of the Black Deep). The south side of the swatchway is steep-to, north side less so. Craft heading south and not requiring 4m of water at LAT, can probably head more directly for the Inner Fisherman once the water in the swatchway starts to shallow.

An amended CTTE chartlet is attached.

It is my intention to re-survey the area during May and consequently I would recommend that you print off this Update and keep it by the chart table rather than annotating the text in the book yet. It is unlikely that the swatchway has changed dramatically since February but I will leave any recommended changes to the text until back from the survey.

If you have access to the 2nd April edition of Chart 1975, you will note that there are two '*FOUL*' symbols in the swatchway. CTTE has made a previous enquiry of the UKHO and PLA of these *FOULS* and they refer to minimal debris found many years ago at a depth greater than currently available (in other words buried under the sea-bed). Indeed the PLA are of the view that these should not be shown and you may be reassured that they will not impede the passage of any yacht.

Note that it will take time for the changes shown on the new edition of Chart 1975 to be included in chart plotter images and Leisure Folios. Consequently users will have to take the counter intuitive option of ignoring what is shown!



CTTE's view of the SW Sunk Swatchway

Depth in metres reduced to chart datum using data from the *National Tidal and Sea Level Facility*, provided by the *British Oceanography Data Centre* and funded by the *Environment Agency*.

Caution: soundings taken on leisure equipment. Whilst every care has been taken in the preparation of this data, it cannot be guaranteed that these depths will remain. Navigators should consider the suitability of the waypoints for their own use.

Soundings taken 3rd June, 2014 (C) R. Gaspar 2015 - Eastern Waypoint amended following new edition of UKHO chart 1975, 2nd April, 2015

Waypoints:

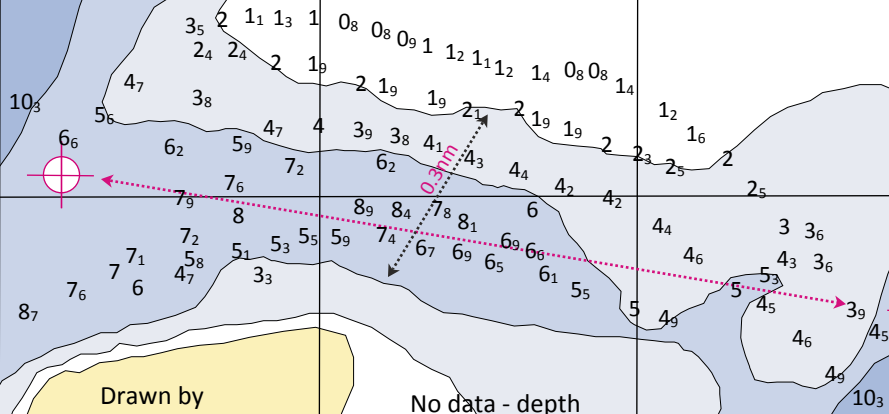
Western side:
51° 38' 02.5N, 001° 16' 20.0E

Eastern side:
51° 37' 8.00N, 001° 18' 8.00E

Rhumb line:
1.64nm at 098°(T)/278°(T)

Barrow Sands

Middle Sunk



Drawn by observation

SW Sunk

Barrow No 5
Fl.G.2.5s

Barrow No 6
Fl(4)R.15s

Black Deep No 7
QG

Black Deep

Barrow Deep

Wreckage of the former SW Sunk beacon

Obstn (awash)

