

Bradwell Creek

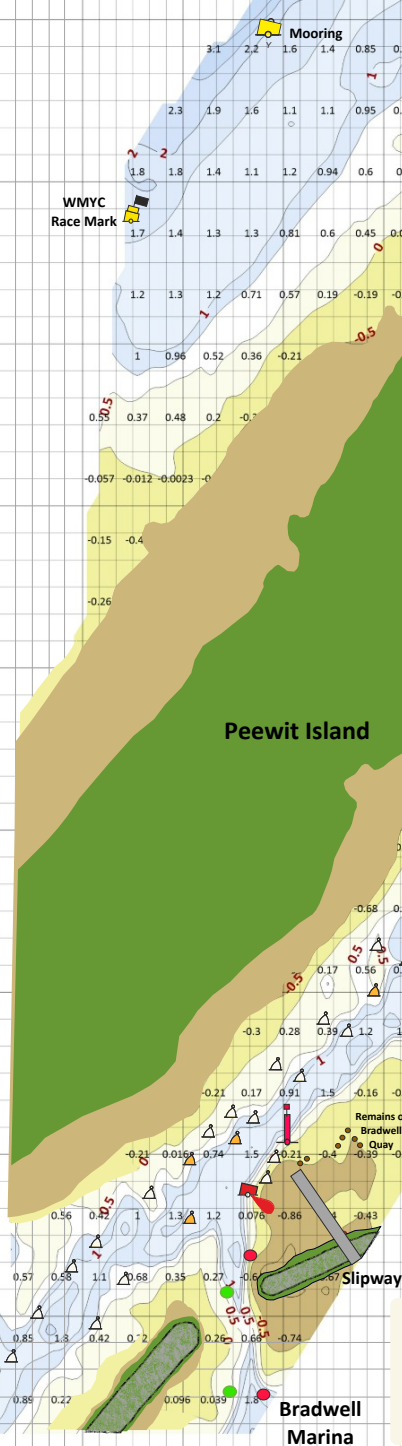
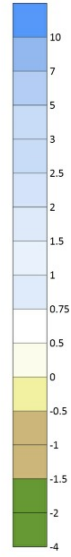
Notes

Depths in metres reduced to Chart Datum based upon live data provided by the Port of London Authority. Positions refer to WGS 84 datum Mercator Projection.

11493 soundings were taken on 21st July, 2020 and have been used in the compilation of this chartlet.

Caution

Soundings are taken on leisure equipment. Whilst every care has been taken in the preparation of this data, there is no guarantee that depths will remain.



Tidal Predictions at Bradwell Creek

Predictions for tidal heights in metres at Bradwell Creek at the local time (add 35 minutes to Walton HW on Springs, 25 minutes on Neaps).

Note: These are predictions based on mean data not exact values. Values can be affected by weather conditions.

Time at Bradwell	Equinoctial Neap Range (Extra small range 2.4m)	Mean Neap Range 2.9m	Mean Spring Range 4.8m	Equinoctial Spring Range (Extra large range 5.2m)
-6	1.8	1.6	0.5	0.6
-5	2.0	1.9	0.9	1.1
-4	2.4	2.4	1.7	1.9
-3	3.0	3.1	2.9	3.2
-2	3.6	3.8	4.1	4.5
-1	4.0	4.3	4.9	5.4
HW	4.2	4.5	5.3	5.8
+1	2.0	4.3	4.9	5.4
+2	3.6	3.8	4.1	4.5
+3	3.0	3.1	2.9	3.2
+4	2.4	2.4	1.7	1.9
+5	2.0	1.9	0.9	1.1
+6	1.8	1.6	0.5	0.6

Download this and others from: www.crossingthamesestuary.com

Bradwell 2020 all data V3.pdf