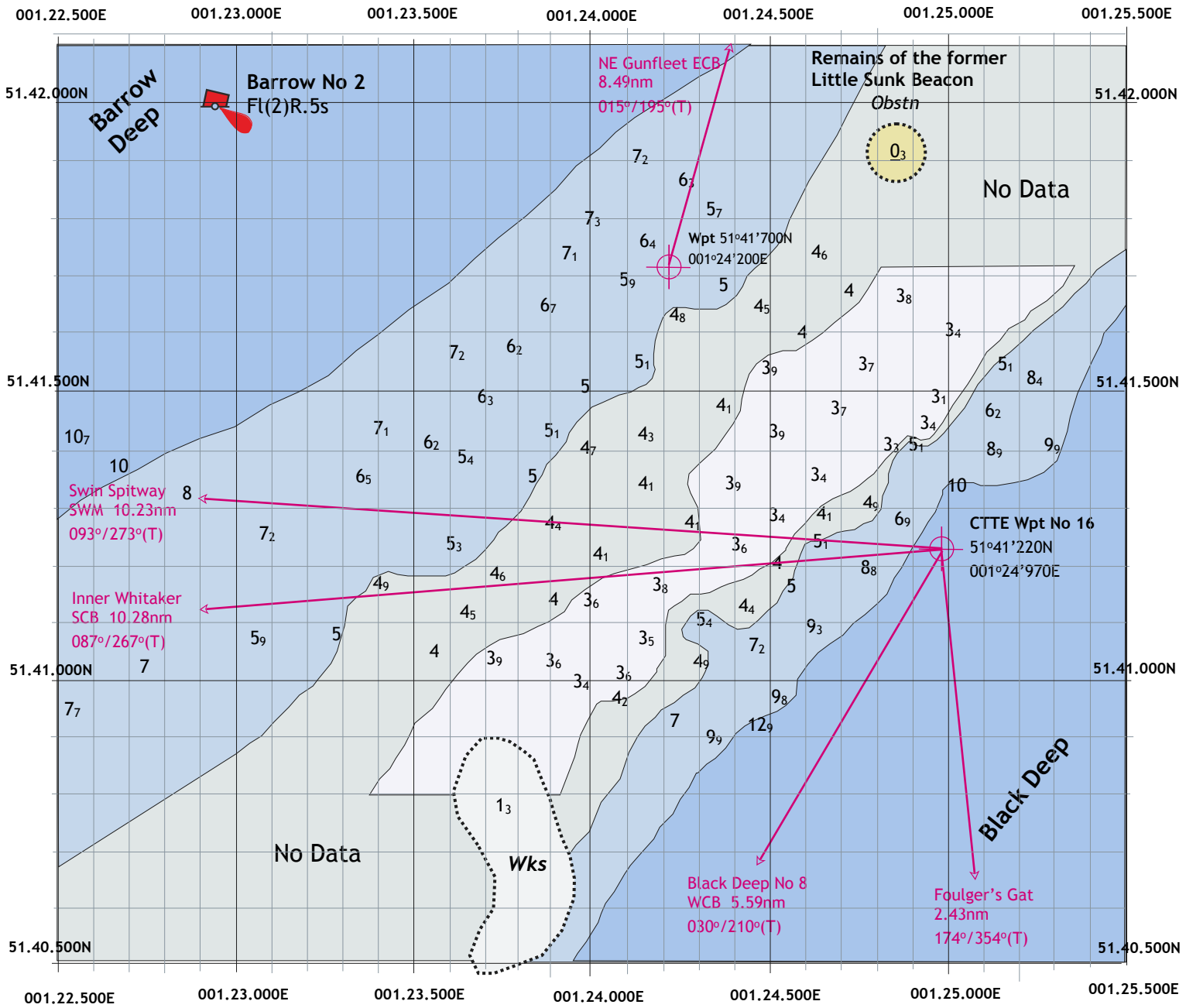


The Sunk Sand adjacent to the Barrow No 2 PHM



Notes

Depths in metres reduced to CD based upon tidal data provided by the British Oceanographic Data Centre.

Positions refer to the WGS 84 datum

Soundings taken 13.08.12

Caution

Soundings taken on leisure equipment Whilst every care has been taken in the preparation of this data, it cannot be guaranteed that these depths will remain

Wrecks are shown as having swept depth of 1₃ metres by sounding and the Obstr at the Little Sunk as drying 0₃ metres on Admiralty Charts.

Note that Rhumb lines do not take account of the tide and that Foulger's Gat may be closed during 2012



In association with



Barrow No 2 V4 2012 + RL

© R. Gaspar 2012. All rights reserved